

# Tourist Guide

— Discovery guide 2023 —



PAYS DE SAINT GILLES  
CROIX DE VIE  
VENDÉE

# Summary

<b>Local products</b>          <b>7</b>		<b>Beaches</b>          <b>10</b>
<b>Water sports</b>          <b>12</b>	<b>Fishing</b>          <b>15</b>	<b>Nature</b>          <b>16</b>
	<b>Historical places of interest</b>          <b>18</b>	<b>GUIDE EDITED BY:</b> l'Office de Tourisme du Pays de Saint Gilles Croix de Vie, Organisme de tourisme inscrit au registre des opérateurs de voyages et de séjours : IM085110021. SIRET : 519 477 228 00018 APE : 7990Z TVA Intracommunautaire: FR 14519477228  <b>EDITING AND GRAPHIC DESIGN:</b> Apapa Rosenthal - apaparosenthal.com contact@apaparosenthal.com  <b>ILLUSTRATIONS:</b> Apapa Rosenthal®  <b>PRINTING:</b> Vincent Imprimeries Z.I. du Menneton 32, avenue Thérèse Voisin B.P. 4229 - 37042 Tours Cedex 1    <b>COPYRIGHTS:</b> Simon Bourcier Mélanie Chaigneau Alexandre Lamoureux Julien Gazeau et Farid Makhlof
<b>Places to visit and leisure activities</b>          <b>20</b>	<b>Some French expressions</b>          <b>25</b>	

The Tourist Office of the Pays de Saint Gilles Croix de Vie declines all responsibility for program changes that may occur after the publication of this guide. This document is not contractual, the information has been communicated to us by the service providers. The Tourist Office cannot be held responsible for the information provided. Eat 5 fruits and vegetables per day/ alcohol abuse is dangerous for health.

## OUR TOURIST INFORMATION CENTRES

# Opening Time

### BREM SUR MER

#### SEPTEMBER TO JUNE

Monday, Tuesday, Thursday and Friday :  
9.30 am - 12.30 pm / 2 pm - 6 pm  
Saturday : 9.30 am - 12.30 pm  
Closed on Wednesday and Sunday

#### JULY AND AUGUST

Monday to Saturday 9.30 am - 1 pm / 2 pm - 7 pm

### BRÉTIGNOLLES SUR MER

#### OCTOBER TO MARCH

Monday to Friday :  
9.30 am - 12.30 pm / 2 pm - 6 pm  
Saturday : 9.30 am - 12.30 pm

#### JUNE

Monday to Saturday : 9.30 - 12.30 pm / 14 - 18.30 pm  
Sunday : 10 - 12:30 pm

#### APRIL, MAY AND SEPTEMBER

Monday to Saturday : 9.30 am - 12.30 pm /  
2 pm-6.30 pm

#### JULY AND AUGUST

Monday to Saturday : 9.30 am - 1 pm / 2 pm - 7 pm  
Sunday : 9.30 am - 1 pm

### SAINT GILLES CROIX DE VIE

#### SEPTEMBER TO JUNE

Monday to Saturday : 9.30 am - 12.30 pm  
/ 2 pm - 6.30 pm (6 pm in winter)

Open on pre-season bank holidays and Sunday morning from June to mid-September

#### JULY AND AUGUST

Monday to Saturday : 9.30 am - 1 pm / 2 pm - 7 pm  
Sunday : 10 am - 1 pm / 3.30 pm - 7 pm

### SAINT HILAIRE DE RIEZ

#### MID-SEPTEMBER TO MAY

Monday to Saturday : 9.30 am - 12.30 pm  
/ 2 pm - 6 pm - open on pre-season bank holidays

#### JUNE AND BEGINNING OF SEPTEMBER

Monday to Saturday :  
9.30 am - 12.30 pm / 2 pm-6.30 pm  
Sunday : 10 am - 12.30 pm

#### JULY AND AUGUST

Monday to Saturday : 9.30 am - 1 pm / 2 pm - 7 pm  
Sunday and bank holiday: 10 am - 1 pm /  
4 pm - 6.30 pm

#### SEASONAL INFORMATION

**POINT LES MOUETTES - AVENUE DE LA PÈGE**

#### FROM JULY 10 TO AUGUST 26

Monday to Saturday : 9.30 am - 1 pm / 3 pm - 7 pm

DISCOVER ALL THE PAYS  
DE SAINT GILLES OFFERS  
ON THE SOCIAL NETWORKS



## Customer Commitments

IN ORDER TO IMPROVE  
THE QUALITY OF OUR  
SERVICES, WE ARE  
COMMITTED TO :

- Provide a warm welcome
- Simplify access to your information and procedures
- Inform and advise you
- Process your suggestions and complaints



Keep an eye out for the  
'Welcome en Vendée' logo.  
It could help make your stay  
more enjoyable.

The 'Welcome en Vendée' campaign was set up by Brittany, Normandy and Pays de la Loire to provide English speaking tourists with a whole host of tourism services. This means that everyone involved - tourist information centres, accommodation providers, restaurants and recreational sites - is fully invested in the campaign.

Visit [www.vendee-tourism.co.uk](http://www.vendee-tourism.co.uk) for more information.

# BOOK YOUR OUTINGS AT THE TOURIST OFFICE



Pre-booking highly recommended:  
[uk.payssaintgilles-tourisme.fr/visitor-information/the-tourist-office/  
tickets-on-sale-at-the-tourist-office/](http://uk.payssaintgilles-tourisme.fr/visitor-information/the-tourist-office/tickets-on-sale-at-the-tourist-office/)



## FOLLOW THE GUIDE

A variety of guided tours with the family or amongst friends, to book online or via our tourist office staff: heritage, nature, history, local curiosities will no longer hold any secrets for you! Tours in French only.

## BOOKING AT THE TOURIST INFORMATION

By booking in the 4 Pays de Saint Gilles Croix de Vie Tourist Offices, you can take advantage of reduced rates on many activities and visits: walks, excursions, theme parks, the Puy du Fou and l'Île d'Yeu....

**4**  
**POINTS**  
**OF SALE**

**SAINT GILLES CROIX DE VIE**  
Place de la Gare - Tél. : 02 51 55 03 66  
[contact@saintgillescroixdevie-tourisme.fr](mailto:contact@saintgillescroixdevie-tourisme.fr)

**SAINT HILAIRE DE RIEZ**  
21 Place Gaston Pateau - Tél. : 02 51 54 31 97  
[contact@sainthilairederiez-tourisme.fr](mailto:contact@sainthilairederiez-tourisme.fr)  
and Point Info des Mouettes in summer  
Avenue de la Pège

**BRETIGNOLLES SUR MER**  
1 boulevard du Nord - Tél. : 02 51 90 12 78  
[contact@bretignollessurmer-tourisme.fr](mailto:contact@bretignollessurmer-tourisme.fr)

**BREM SUR MER**  
21 ter rue de l'Océan - Tél. : 02 51 90 92 33  
[contact@bremsurmer-tourisme.fr](mailto:contact@bremsurmer-tourisme.fr)

## USEFUL INFORMATION

### WEATHER:

A daily weather report is on display in our tourist information centres throughout the summer. Weather forecast available at:

<https://uk.payssaintgilles-tourisme.fr/>

### SHOP OPENING TIMES:

During the summer, shops and supermarkets are usually open between 9am and 7pm, Monday to Saturday (some shops are open on Sunday morning). During the rest of the year, shops are usually closed on Mondays.

### FOREIGN CURRENCY:

Post offices and banks can exchange foreign currency, but only if given advance warning. For urgent requests, contact the currency exchange office at Nantes airport.

Tel: + 33 240 848 294.

## EMERGENCY NUMBERS



**European emergency number - Tel: 112**

**National Police (Gendarmerie) - Tel: 17**

9 rue des Vergers d'Eole  
**SAINT GILLES CROIX DE VIE**

Tel: + 33 2 51 55 01 19

All year round

**Fire Brigade - Tel: 18**

**SAINT GILLES CROIX DE VIE**  
or **BREM SUR MER**

**Poison Control Centre**

**ANGERS 24h/7**

Tel: +33 2 41 48 21 21

**Emergency Services - Tel: 15**

**GP Surgeries - Tel: 116 117**

If urgent: 15

Night-time, weekend and public holidays  
emergencies: 15

**Chemist on call - Tel: 32 37**

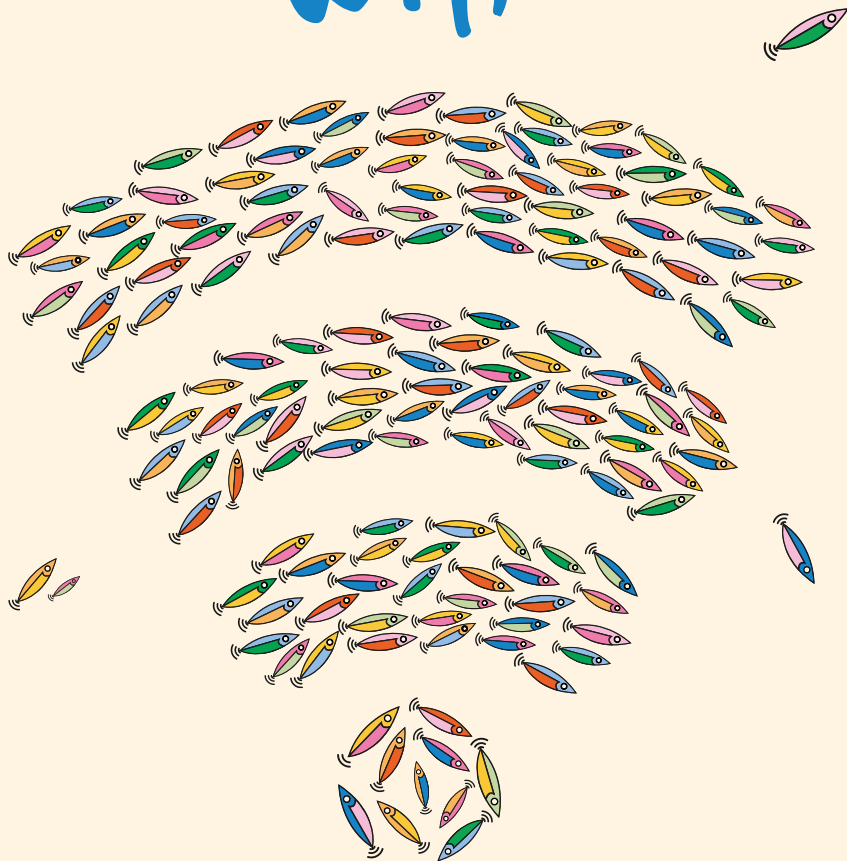
**Dental service - Tel: + 33 2 51 46 28 83**

From 10:00 to 12:00 am the week-end.



SAIL TO THE RHYTHM OF

# unlimited wifi



Connect to the Pays de Saint Gilles network  
9 hotspots unlimited

[UK.PAYSSAINTGILLES-TOURISME.FR/VISITOR-INFORMATION/WI-FI-ACCESS/](http://UK.PAYSSAINTGILLES-TOURISME.FR/VISITOR-INFORMATION/WI-FI-ACCESS/)

# LOCAL PRODUCTS

The Pays de Saint Gilles Croix de Vie offers a huge range of local specialties from the land and from the sea, all of which waiting to delight your taste buds. Let the quality of the products speak for themselves.

*A number of these products have enhanced the culinary reputation of the area:*



## WINE FROM BREM SUR MER

Since 2011 this wine-growing area has become renowned for its AOC (controlled designation of origin) red, white and rosé wines. The wine-growers are happy to show you around their cellars and talk about how they produce their wine.

## SALT

The reclaimed salt marshes of Saint Hilaire de Riez produce the delicate fleur de sel. Visitors can also sample different types of salt, flavoured with cumin, basil and exotic spices.

## SARDINES

This small blue torpedo is the pride of Saint Gilles Croix de Vie because it is the first wild fish to be awarded the 'Label Rouge' certification. You can find it at any of our local markets.

## PRAWNS

These are fished from November to February along our coastline. In winter time the prawn takes its rightful place as the king of edible shellfish.

## ROSE-BASED PRODUCTS

The Roseraie de Vendée is located in Saint Révérend. All products: jam, jellies, preserves, etc. are made from rose petals and the production is 100% artisanal.

## MONKEY LIQUEUR

The name of this drink is bound up with the story of a barrel containing a monkey conserved in alcohol that washed up on nearby shores in 1908. Made from rum and citrus fruits, it is especially good in cakes and cocktails.

## VENDÉEN SHEEP

The Jaunay marshes/Gorand ford is the birth place of this race of sheep which came to the fore in the 1960s. Don't miss the Sheep festival in Givrand in July. It's the perfect opportunity to taste lamb from 'the land and the sea.

## FRUITS AND VEGETABLES FARMING

Saint Hilaire de Riez is known for farming. The fruits and vegetables from these small farms go directly to the stalls of the local markets.



# PRODUCERS IN THE PAYS DE SAINT GILLES CROIX DE VIE



## SAINT GILLES CROIX DE VIE

### BISCUITERIE DE SAINT GILLES CROIX DE VIE (BISCUITS)

2 Place Guy Kergoustin  
Tel: +33 2 51 55 86 29

### LES BRASSEURS DE LA VIE (BEER)

50 rue des Couvreur - Box 15 Bégaud Pôle  
Tel: +33 2 51 55 04 75  
[www.lesbrasseursdelavie.com](http://www.lesbrasseursdelavie.com)

### LES RUCHERS DE SAINT GILLES (HONEY)

6 bis rue de la Chenelière  
Tel: +33 6 87 30 87 99  
[www.lesruchersdesaintgilles.fr](http://www.lesruchersdesaintgilles.fr)

### BISCUITERIE LES PETITS CAGNIOTES (BISCUITS)

18 Quai de la République  
Tel: +33 2 51 60 61 31  
[www.lespetitscagniot.es.com](http://www.lespetitscagniot.es.com)

### LES VIVIERS DE VENDÉE (SEAFOOD)

206 rue des Paludiers  
Tel: +33 7 67 05 02 51  
[www.les-viviers-de-vendee.business.site](http://www.les-viviers-de-vendee.business.site)

### LA TRINITAINE (BISCUITS)

Rue du Général de Gaulle  
Tel: +33 2 90 74 21 05  
[www.latrinitaine.com](http://www.latrinitaine.com)

## BRÉTIGNOLLES SUR MER

### BISCUITERIE CROQUEZ LA VENDÉE

(LOCAL PRODUCTS)  
2 rue du Pied de Chaume  
Tel: +33 9 83 88 81 95  
[croquezlavendee@orange.fr](mailto:croquezlavendee@orange.fr)

### BRASSERIE DU MARSOUIN (BEER)

21 rue Gutenberg - ZA Le Peuple  
Tel: +33 6 06 40 83 68  
[www.brasserieumarsouin.fr](http://www.brasserieumarsouin.fr)

## BREM SUR MER

### DOMAINE SAINT NICOLAS (WINE)

Les Clous - L'Île d'Olonne  
Tel: +33 2 51 33 13 04  
[www.domainesaintnicolas.com](http://www.domainesaintnicolas.com)



### DOMAINE ERIC SAGE (WINE)

La Mignotière  
Tel: +33 6 37 75 08 99  
<https://ericsagevigneron.fr>

### CAVE LAURENT PAJOT (WINE)

70 rue de la Croix Pénard - Route de Vairé  
Tel: +33 6 17 70 27 93  
<https://pajot-laurent-viticulteur.business.site/>

### DOMAINE DES GRANGES (WINE)

15 rue des Granges - Olonne sur Mer  
Tel: +33 2 51 33 45 01  
[www.domainedesgranges.fr](http://www.domainedesgranges.fr)

### TROUSSEMINETTE LA CAVE DES VIGNERONS

(LOCAL PRODUCTS)  
32 rue des Onizières  
Tel: +33 6 14 21 79 16  
[www.facebook.com/trousseminette.fr](http://www.facebook.com/trousseminette.fr)



### DOMAINE DU LUX EN ROC (WINE)

5 impasse Richelieu  
Tel: +33 2 51 90 56 84  
[luxenroc-richard@orange.fr](mailto:luxenroc-richard@orange.fr)

### L'ORÉE DU SABIA (WINE)

1 rue du Sablais  
Tel: +33 2 51 96 30 61  
[www.loreedusabia.com](http://www.loreedusabia.com)

## COËX

### LE JARDIN DE PAULINE 85 (EDIBLE PLANTS AND FLOWERS)

La Bernardière - 16 rue des Campanules  
Tel: +33 6 98 51 21 00



## SAINT HILAIRE DE RIEZ

### LES VIVIERS DE SION (SEAFOOD)

12 rue des Estivants  
Tel: + 33 2 51 54 09 30  
[www.viviersdesion.fr](http://www.viviersdesion.fr)

### SEL DE VIE (SALT)

87 route du Sel  
Tel: + 33 6 15 74 26 81  
[www.sel-de-vie.com](http://www.sel-de-vie.com)

## NOTRE DAME DE RIEZ

### TERRE DE VENDÉE (LOCAL PRODUCTS)

135 chemin de la Longeais  
Tel: +33 6 36 18 09 43  
[www.terre-de-vendee.fr](http://www.terre-de-vendee.fr)

## SAINT RÉVÉREND

### LE MOULIN DES GOURMANDS (FLOUR)

Rue René Bazin  
Tel: + 33 2 51 60 16 72  
[www.moulin-gourmands.fr](http://www.moulin-gourmands.fr)



### LA ROSERAIE DE VENDÉE (ROSE-BASED PRODUCTS)

Rond-point des 4 Chemins  
Tel: + 33 2 51 55 24 03  
[www.laroseraiedevendee.fr](http://www.laroseraiedevendee.fr)



# LOCAL KNOW-HOW



## GIVRAND

### ATELIER VERRE'SION COLORÉE (ARTS)

4 impasse de Bel Air  
Tel: +33 6 68 92 05 61  
[www.verresion-coloree.fr](http://www.verresion-coloree.fr)

## SAINT HILAIRE DE RIEZ

### SAVONNERIE MAGIK POTION (SOAPS)

7 chemin de la Petite Mazurie  
Tel: +33 6 13 24 79 73  
[www.savonneriemagikpotion.com](http://www.savonneriemagikpotion.com)

## LA CHAIZE GIRAUD

### APRÈS LA CUEILLETTE (SOAP)

12 chemin du Cormier  
Tel: + 33 6 84 15 22 14  
[www.apreslacueillette.fr](http://www.apreslacueillette.fr)

## SAINT GILLES CROIX DE VIE

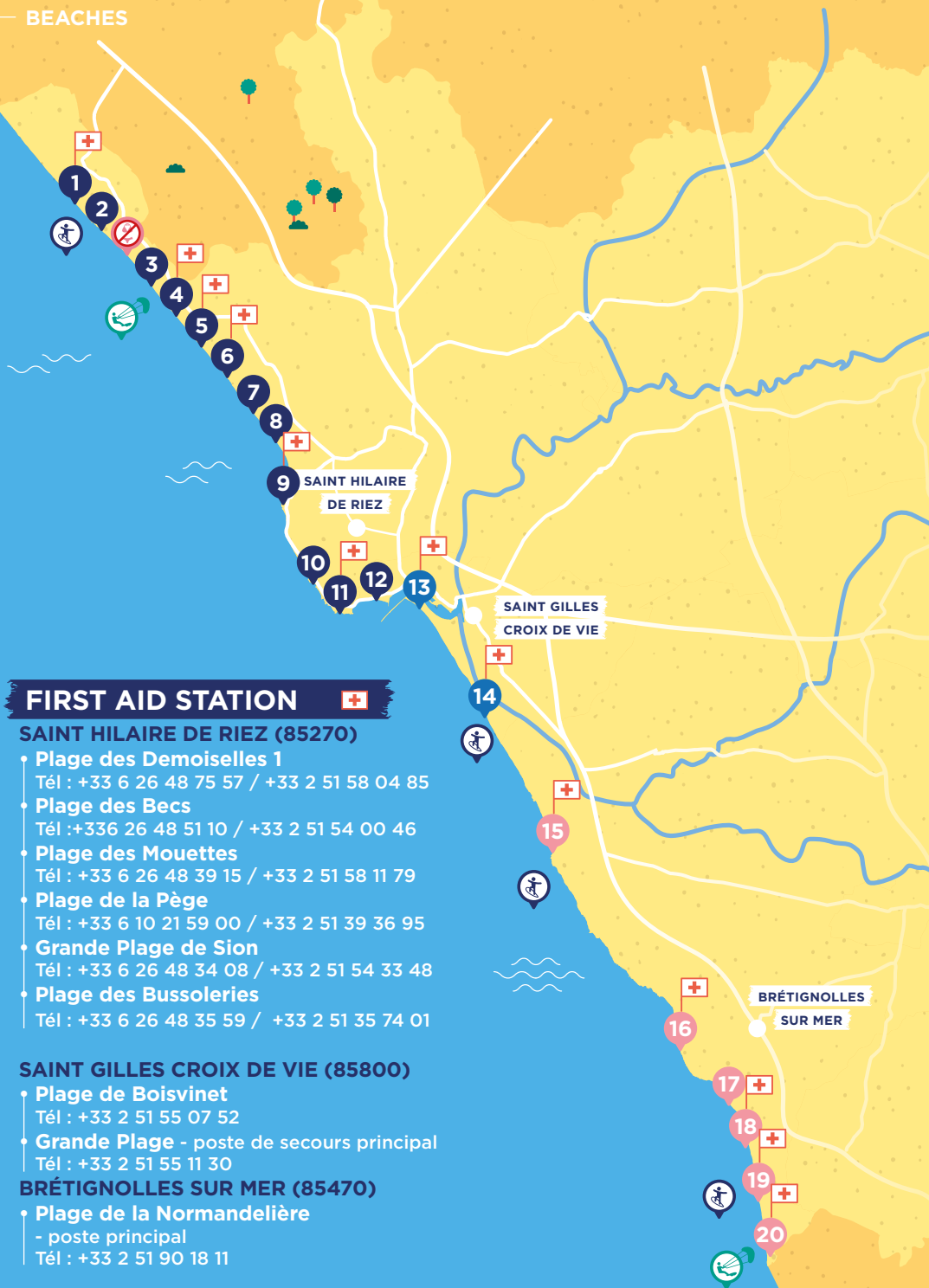
### MOSAVIE (MOSAIC)

20 Grande Avenue  
Tel: +33 6 81 75 64 80

### FAIENCERIE NISTAR (EARTHENWARE)

2 rue de l'Etoile de Mer  
Tel: + 33 2 51 55 35 66  
[www.lebolfrançais.com](http://www.lebolfrançais.com)

## BEACHES



### FIRST AID STATION

#### SAINT HILAIRE DE RIEZ (85270)

- **Plage des Demoiselles 1**  
Tél : +33 6 26 48 75 57 / +33 2 51 58 04 85
- **Plage des Becs**  
Tél : +336 26 48 51 10 / +33 2 51 54 00 46
- **Plage des Mouettes**  
Tél : +33 6 26 48 39 15 / +33 2 51 58 11 79
- **Plage de la Pège**  
Tél : +33 6 10 21 59 00 / +33 2 51 39 36 95
- **Grande Plage de Sion**  
Tél : +33 6 26 48 34 08 / +33 2 51 54 33 48
- **Plage des Bussoleries**  
Tél : +33 6 26 48 35 59 / +33 2 51 35 74 01

#### SAINT GILLES CROIX DE VIE (85800)

- **Plage de Boisvinet**  
Tél : +33 2 51 55 07 52
- **Grande Plage** - poste de secours principal  
Tél : +33 2 51 55 11 30

#### BRÉTIGNOLLES SUR MER (85470)

- **Plage de la Normandelière**  
- poste principal  
Tél : +33 2 51 90 18 11

## SAINT HILAIRE DE RIEZ

### 1 Plage des Demoiselles

- Sand yachting
- Sea sports centre
- Surfing
- Stand up paddling
- Kayaking
- Pedal boats
- Disabled access
- First aid station (July and August)

### 2 Plage des 60 Bornes

- First aid station (July and August)

### 3 Plage des Salins

- First aid station (July and August)

### 4 Plage des Becs

- Disabled access
- First aid station (July and August)
- Stand-up paddling
- Surfing

### 5 Plage des Mouettes

- Disabled access
- First aid station (July and August)
- Stand up paddling
- Surfing

### 6 Plage de la Pège

- Disabled access
- First aid station (July and August)
- Stand up paddling
- Surfing

### 7 Plage de la Parée Préneau

- Kite surfing
- First aid station (July and August)

### 8 Plage de Riez

- Kite surfing
- First aid station (July and August)

### 9 Grande Plage de Sion

- Disabled access
- First aid station (July and August)
- Sea sports centre
- Sailing
- Stand up paddling
- Wind surfing
- Kayaking
- Shore fishing
- Disabled access, Wi-Fi

### 10 Plage des 5 Pineaux

- First aid station (July and August)
- Shore fishing
- Natural pool on the beach

### 11 Plage des Bussoleries

- Disabled access
- First aid station (July and August)
- Natural pool on the beach
- Shore fishing

### 12 La Pelle à Porteau

## SAINT GILLES CROIX DE VIE

### 13 Plage de Boisvinet

- Disabled access
- Sea sports centre
- Sailing
- Kayaking
- Stand up paddling
- First aid station (July and August)
- Kids beach club
- Beach huts for hire

### 14 Grande Plage

- Kids beach club
- Disabled access
- First aid station (July and August)
- Surfing
- Kite surfing
- Sand yachting
- Wi-Fi
- Surf schools
- Beach huts for hire

### 15 Plage de la Sauzaie

- Surfing
- First aid station (July and August)
- Shore fishing

### 16 Plage de la Parée

- First aid station (July and August)
- Shore fishing
- Sea sports centre (July/August)

### 17 Plage du Marais Girard

- Shore fishing

### 18 Plage de la Normandelière

- Disabled access
- First aid station (July and August)

## BRÉTIGNOLLES SUR MER

- Sea sports centre
- Sailing
- Windsurfing
- Kayaking
- Shore fishing
- Wi-Fi

### 19 Plage des Dunes 1

- Surfing
- Surf school
- Disabled access
- First aid station (July and August)
- Stand up paddling

### 20 Plage des Dunes 2

- Surfing
- Kite surfing
- Surf school
- Disabled access
- First aid station (July and August)
- Stand up paddling
- Sea wading

## AUTRES INFORMATIONS



**KITESURFING  
AREAS**



**SURF  
SPOTS**



**NATURIST  
BEACHES**

# WATER SPORTS

With its 20 miles of coastline, 22 beaches and a 1,100 berth marina, the Pays de Saint Gilles Croix de Vie is ideal for all kinds of water sports and water activities.

SPORT	WHERE ?	PROVIDERS
MARINA	<b>SAINT GILLES CROIX DE VIE</b>	<b>PORT LA VIE</b> Tel: + 33 2 51 55 30 83 www.portlavie.fr
BOAT HIRE	<b>SAINT GILLES CROIX DE VIE</b> Marina	<b>AG NAUTIC</b> Tel: + 33 6 25 47 34 01 www.ag-nautic.com
		<b>VOILE ET VIE</b> Tel: + 33 6 11 83 76 22 www.voile-et-vie.fr
		<b>SEMVIÉ NAUTISME</b> Tel : +33 2 51 60 11 11 www.semvie-nautisme.fr
BOAT RIDE		<b>LES BALADES DE LA VIE</b> Saint Gilles Croix de Vie Tel: +33 7 83 50 35 95 www.lesbaladesdelavie.fr
		<b>VENT D'ILES</b> Saint Gilles Croix de Vie Tel: +33 7 66 29 07 98 www.vent-d-iles.fr
SAILING	<b>SAINT HILAIRE DE RIEZ</b> Grande Plage de Sion, Plage des Demoiselles and Les Vallées Lake	<b>SAINT HILAIRE NAUTISME</b> Saint Hilaire de Riez Tel: + 33 2 51 55 99 17 www.sainthilairenautisme.fr
	<b>SAINT GILLES CROIX DE VIE</b> Plage de Boisvinet, Grande Plage and La Soudinière Lake	<b>SEMVIÉ NAUTISME</b> Saint Gilles Croix de Vie Tel: + 33 2 51 60 11 11 www.semvie-nautisme.fr
	<b>BRÉTIGNOLLES SUR MER</b> Plage de la Normandelière	<b>LA NORMANDELIÈRE COUNCIL SAILING CENTRE</b> Brétignolles sur Mer Tel: + 33 2 51 20 81 45 www.bretignollessurmer.fr
KITE SURFING	<b>BRÉTIGNOLLES SUR MER</b> Plage des Dunes 2	<b>VENDÉE SPORTS OCEAN</b> Brétignolles sur Mer Tel: + 33 6 60 99 47 33 www.vendeesportsoccean.fr
	<b>SAINT GILLES CROIX DE VIE</b> Grande Plage	<b>SEMVIÉ NAUTISME</b> See under Sailing
	<b>SAINT HILAIRE DE RIEZ</b> Area between La Plage des Becs and la Plage des Salins	
JET SKI	<b>SAINT GILLES CROIX DE VIE</b> Avenue Jean Cristau	<b>VENDÉE JET LOCATION</b> Saint Gilles Croix de Vie Tel: +33 6 74 16 54 52 www.locationjetski85.com

SPORT	WHERE ?	PROVIDERS
SURFING	<b>SAINT GILLES CROIX DE VIE</b> Grande Plage	<b>SURFING SAINT GILLES</b> Saint Gilles Croix de Vie Tel: + 33 2 28 10 63 78 www.surfing-stgilles.com
		<b>MAHALO SURF</b> Saint Gilles Croix de Vie Tel: + 33 6 58 95 42 53 contact@mahalosurf.fr
		<b>SEMVIE NAUTISME</b> See under Sailing
	<b>BRÉTIGNOLLES SUR MER</b> Plage de la Sauzaie (rocky coastline) and Plages des Dunes (sandy beaches)	<b>BRETEAM SURF CLUB</b> Brétignolles sur Mer Tel: + 33 7 61 13 02 93 www.breteam.fr
		<b>KEEP COOL SURFING</b> Brétignolles sur Mer Tel: + 33 6 61 47 59 37 www.keepcoolsurfing.com
		<b>ATLANTIC LEZARD SURF SCHOOL</b> Brétignolles sur Mer Tel: + 33 6 83 61 13 07 www.lezardsurfschool.com
<b>SAINT HILAIRE DE RIEZ</b> Plage des Demoiselles (for beginners) Plage de Sion Plage de la Pège	<b>SAINT HILAIRE NAUTISME</b> See under Sailing	
	<b>RIDING FACTORY</b> Saint Hilaire de Riez Tel: +33 6 73 02 88 30 www.ridingfactory.fr	
SAND YACHTING	<b>SAINT HILAIRE DE RIEZ</b> Plage des Demoiselles	<b>SAINT HILAIRE NAUTISME</b> See under Sailing
	<b>SAINT GILLES CROIX DE VIE</b> Grande Plage	<b>SEMVIE NAUTISME</b> See under Sailing
WAVESKI	<b>SAINT HILAIRE DE RIEZ</b> Sion beach and Plage des Demoiselles (for beginners)	
	<b>SAINT GILLES CROIX DE VIE</b> Grande Plage	
	<b>BRÉTIGNOLLES SUR MER</b> La Sauzaie beach (rocky coastline) and Les Dunes beaches (sandy beaches)	
CABLE SKIING	<b>SAINT GILLES CROIX DE VIE</b> La Soudinière Lake	<b>SEMVIE NAUTISME</b> See under Sailing
TRAINING BOAT	<b>SAINT GILLES CROIX DE VIE</b> Marina	<b>BATEAU ÉCOLE DE LA VIE</b> Tel: + 33 6 77 98 29 08 www.bateau-ecole-saint-gilles.com

## WATER SPORTS

SPORT	WHERE ?	PROVIDERS	
CANOE- ING	<b>SAINT GILLES CROIX DE VIE</b> River Jaunay	<b>LES P'TITS MOUSSES</b> Saint Gilles Croix de Vie Tel: + 33 6 84 92 89 97 www.les-ptits-mousses.fr	
	<b>GIVRAND</b> River Jaunay	<b>LES CANOËS DU MARAIS</b> Givrand Tel: + 33 6 07 11 37 59 www.les-canoes-du-marais.com	
	<b>LA CHAIZE GIRAUD</b> River Jaunay	<b>CANOË VENDÉE</b> La Chaize Giraud Tel: + 33 7 50 26 44 82 www.canoevendee.com	
	<b>LANDEVIEILLE</b> Lake Jaunay	<b>CANOËVASION</b> Landevieille Tel : +33 6 67 09 80 62 www.canoevasion85.fr	
	<b>BREM SUR MER</b> La Chabossière marshes	<b>OCTOSUP</b> Brem sur Mer Tel: +33 6 62 81 27 24 www.octosup.fr	
SEA WADING	<b>SAINT HILAIRE DE RIEZ</b> Plage des Demoiselles	<b>SAINT HILAIRE NAUTISME</b> See under Sailing	
	<b>SAINT GILLES CROIX DE VIE</b> Grande Plage	<b>LES BALADES DE CHLOË</b> Saint Gilles Croix de Vie Tel: +33 6 37 79 77 13	
	<b>BRÉTIGNOLLES SUR MER</b> Plage des Dunes	<b>LA CABANE</b> Brem-sur-Mer Tel: +33 6 76 70 04 60 www.lacabane-brem.fr	
KAYAK- ING		<b>SAINT HILAIRE NAUTISME</b> <b>SEMVIE NAUTISME</b> <b>ÉCOLE MUNICIPALE DE VOILE</b> <b>DE LA NORMANDELIÈRE</b> See under Sailing	
STAND UP PAD- DLING	<b>BREM SUR MER</b> La Chabossière marshes	<b>OCTOSUP</b> Brem sur Mer Tel: + 33 6 62 81 27 24 www.octosup.fr	
	<b>SAINT HILAIRE DE RIEZ</b> Grande Plage de Sion, Plage des Demoiselles and Les Vallées lake	<b>SAINT HILAIRE NAUTISME</b> See under Sailing	
	<b>SAINT GILLES CROIX DE VIE</b> Grande Plage and La Soudinière Lake	<b>RIDING FACTORY</b> Saint Hilaire de Riez Tel: +33 6 73 02 88 30 www.ridingfactory.fr	
	<b>BRÉTIGNOLLES SUR MER</b> Plage des Dunes	<b>MAHALO SURF</b> <b>SURFING SAINT GILLES</b> <b>LES P'TITS MOUSSES</b> See under Surfing	
		<b>ATLANTIC LEZARD SURF SCHOOL</b> <b>KEEP COOL SURFING</b> <b>BRETEAM SURF CLUB</b> See under Canoeing	

# FISHING

*The fishing port: boats, sailors, fish market and authenticity*

Saint Gilles Croix de Vie fishing port is a showcase for the maritime heritage of the town. Its fleet of 42 boats crewed by 100 seamen is specialised in sardine and mackerel fishing. The fish market is computerised and there are 10 wholesale fish trade workshops operating under European standards. The boats are designed to be multipurpose: dragnet, offshore, lobster, longline, seine-haul, etc.

## SEA FISHING TRIPS

Enjoy a few hours sea fishing with family or friends just a couple of nautical miles off the coast. Departure point: the fishing port of Saint Gilles Croix de Vie.

### MEPHISTO IV

*Fishing port*

**SAINT GILLES CROIX DE VIE**

Tel: + 33 2 51 55 13 29 / + 33 6 21 34 22 28

[www.mephisto4.com](http://www.mephisto4.com)

Fishing and boat trips.

### L'AMI DU PECHEUR

*Fishing port*

**SAINT GILLES CROIX DE VIE**

Tel: + 33 6 40 20 89 17

[www.amidupecheur.fr](http://www.amidupecheur.fr)

Sea fishing – half day or evening.

## OUR FAVOURITE FISHING SPOTS

**Lake Jaunay in Landevieille:** for its well-kept surroundings, its natural beauty and the range of species.

**Lake Gué Gorand in Coëx:** for the peace and quiet, the abundance of space and the easy access.

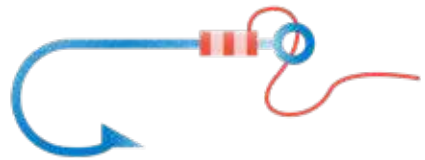
**Les Morinières Lake in Brétignolles sur Mer:** perfect for improving one's technique.

**Le Pas Opton in Le Fenouiller:** for its rarer species of fish and its location at a former port.

**On the jetty at Saint Gilles Croix de Vie:** because it feels like you are out at sea, even though your feet are firmly planted on the ground.

## ANGLING

- You can go angling all along the coast (apart from designated bathing areas) and in the salt water sections of the River Vie, the River Auzance and the Brem marshes – no fishing permit required.
- Anglers are requested to show respect towards working fishermen by not disrupting their passage through the channel or their approach to the quayside.
- It is permissible to fish from the moles, the jetties and the quayside. It is forbidden to fish in the fishing port and the marina.
- The Rivers Jaunay, Vie and Ligneron go through the Saint Gilles Croix de Vie area, so if you have a permit, you can fish for freshwater fish. There are also a number of man-made lakes as well as Lake Gué Gorand and Lake Jaunay.



**The tourist information centres keep a detailed list of all the freshwater fishing spots.**

# A PATCHWORK OF LANDSCAPES

*Go for a walk or a stroll and breathe in the air*

The Pays de Saint Gilles Croix de Vie has a plethora of landscapes: beaches, hidden coves, dunes, marshland, forests and vineyards. It doesn't matter whether you prefer hiking, cycling or horse riding, the unspoiled riches of these diverse environments are accessible to everyone.

Each destination is highly adaptable to your needs: the coastline is a magnet for families, and the Trou du Diable (Devil's Hole) the children's attraction, but for others, there's the simplicity of a peaceful walk around Lake Jaunay or the salt marshes to observe the plentiful bird life and rekindle a strong connection with nature.



## HIKING OR CYCLING

There are lots of interesting signposted walks to try out across the countryside, around the wine-growing areas, along the river banks or through the marshes. There is also a map of cycling/walking routes available on request at any of the tourist information points or online (see under WALKS). You can explore the Saint Gilles Croix de Vie area with our geolocation routes on our mobile phone app: Pays de Saint Gilles Tour.

## THE ROCKY COASTLINE

Our seaboard has two sections of rocky coastline: north of Saint Gilles Croix de Vie to Sion sur l'Océan, and Saint Hilaire de Riez/La Sauzaie to La Normandelière at Brétignolles sur Mer. The 2 miles of granite coast in Saint Hilaire de Riez is known as the Corniche Vendéenne (Vendéen Corniche) and has been classed as a remarkable natural site since 1926.

These jagged cliffs boast several unusual rock formations:

- **Les Cinq Pineaux** (The Five Monks), a group of individual rocks that seem to guard the entrance to the village of Sion.

- **Le Trou du Diable** (Devil's Hole), a deep cleft in the rock which becomes a cauldron of foam bubbling and spurting out at high tide.

The GR8 long distance path (Grand Randonnée - Côte de Lumière) and a cycle path hug the coastline.

Plages des Dunes, Brétignolles sur Mer



## THE DUNES

The long belt of sand dunes on the Atlantic coast straddles a shoreline of beautiful sandy beaches. Dunes represent the first wall of defence against the wind and the sea, but the dune environment remains fragile.



## THE FOREST

For lovers of walks and large forests, the Pays de Monts 1,500 acre public forest envelops the town of Saint Hilaire de Riez. Most of the trees are maritime pine, helm oak and broadleaf varieties, offering the opportunity for cycling and hiking. Choose a signposted walk or try out the fitness trail and stop off at one of the many picnic spots.

## THE MARSHES

The saltwater and freshwater marshes in Saint Hilaire de Riez are home to an amazing variety of wildlife. The salt marshes, which were first created in the 7th century, are a reminder of how important the production of 'white gold' was in the not too distant past. The restoration of abandoned salt marshes has invigorated the local salt industry since the 1990s. Learn about the traditions of the salt workers as they harvest the salt from the River Vie salt marshes in Saint Hilaire de Riez.

### RECOMMENDED VISIT:

#### MARAI SALANTS DE LA VIE

81 route du Sel  
SAINT HILAIRE DE RIEZ  
Tel: + 33 6 81 97 39 84  
[www.sainthilairederiez.fr](http://www.sainthilairederiez.fr)

#### MARAI PREDEVIE

Parking Marais salants, D38 bis, Route du sel  
SAINT HILAIRE DE RIEZ  
Tel: + 33 6 80 73 98 85  
[contact@marais-predevie.fr](mailto:contact@marais-predevie.fr)

## THE VINEYARDS

Brem is a well-known wine growing area and has gained an excellent reputation for the quality of its Vendéen wines, especially since being awarded the AOC (controlled designation of origin) label in the spring of 2011.

Follow the Wine Trail to Brem by downloading our two geolocation routes for wine connoisseurs. Available on our website.

## THE PARKS AND GARDENS

### FREE ADMISSION

Starting in the north and travelling south, you can visit the Grosse Terre Gardens in Saint Hilaire de Riez, the Philippe Perrocheau garden in Coëx, the Morinières Park in Brétignolles sur Mer and the Genêts Park in Brem sur Mer. So many places to enjoy a restful visit under the shade of the trees.

### ENTRANCE FEE

#### LE JARDIN DES RIGONNERIES

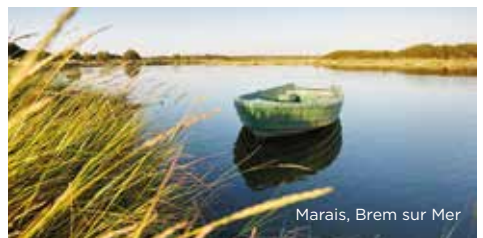
Route de la Marzelle à l'Oisson  
SAINT HILAIRE DE RIEZ  
Tel: + 33 6 37 97 78 86  
[www.lejardindesrigonneries.fr](http://www.lejardindesrigonneries.fr)

#### LA ROSERAIE DE VENDÉE

Rond-point des 4 Chemins  
SAINT RÉVÉREND  
Tel: + 33 2 51 55 24 03  
[www.laroseraiedevendee.fr](http://www.laroseraiedevendee.fr)

## THE RIVERS AND LAKES

The River Vie separates the town of Saint Gilles Croix de Vie into its two parts, Saint Gilles and Croix de Vie. At high tide it brings seawater to the salt marshes of Saint Hilaire de Riez and also acts as a well-stocked pantry for our resident feathered friends. The River Jaunay is a tributary of the Vie and an excellent waterway for kayaking and canoeing, but it should not be confused with Lake Jaunay, which is a vast expanse of water stretching more than 5 miles. It is also a happy hunting ground for anglers, hikers and geocachers. Lake Jaunay in Landevieille and Lake Gué Gorand in Coëx are both oases of calm. The walking and cycling paths are a great way to enjoy the quiet of the country, far away from the hubbub of urban life.



Marais, Brem sur Mer

# HISTORICAL PLACES OF INTEREST

## RELIGIOUS HERITAGE

### Saint Gilles Croix de Vie

- **CHURCH SAINT GILLES:**

19th century painting of St Roch, stained glass windows of Sister St Sulpice, Stations of the Cross painted by Henry Simon.

- **CHURCH SAINTE CROIX:**

19th century pulpit, pipe organ, statue of Notre Dame du Bon Port.

### Saint Hilaire de Riez

- **SION CHAPEL:**

Built in 1929 in response to the needs of the local parish which had seen a growing influx of summer visitors.

- **NOTRE DAME DE PITIÉ CHAPEL:**

For many years local historians believed that this chapel was constructed in 1610 under the directions of Marie de Beaucaire, Baroness of Rié, for her husband, Sébastien de Luxembourg. However, after further excavation work in 2007, ancient remnants were discovered and these indicate that the original building dates back to the 14th or 15th century.

- **CHURCH FROM THE 17TH AND 18TH CENTURIES:**

3 altarpieces listed as historic monuments. Paintings by Henry Simon.

### Brem sur Mer

- **CHURCH SAINT NICOLAS:**

Romanesque church from the 11th century. The oldest church in the Vendée and one of the most beautiful medieval buildings in the whole department. Listed as a historic monument in 1956. Discover the remarkable pediment, the murals and the 17th century crucifix.

- **WAYSIDE CROSS OF ST NICOLAS:**

Tumulus dating from the feudal period, located on high ground overlooking the church of St Nicolas.

### Brétignolles sur Mer

- **CHURCH NOTRE-DAME-DE-L'ASSOMPTION:**

Church from the middle of the 19th century that was restored in the 20th century. The choir is home to a high altar in white marble designed by Victor Clair, an organ and a statue of Notre-Dame-de-l'Assomption.

### La Chaize Giraud

- **CHURCH NOTRE DAME:**

At the end of the 1800s, this 12th century church was almost entirely rebuilt to how it would have first looked. All that is left of the original is the western facade which boasts a Poitevin style Romanesque portal considered to be one of the most beautiful in the Poitou region of France.



Feu de Grosse Terre, Saint Hilaire de Riez

### Coëx

- **CHURCH NOTRE DAME:**

14th and 20th centuries. Flamboyant Gothic style stained glass windows, modern windows by Louis Mazetier (master stained glass craftsman who created the windows above the nave at Notre Dame de Paris), Stations of the Cross sculpted on slate stone, 11th century baptismal font (the oldest in the Vendée).

### Le Fenouiller

- **CHURCH ST LAURENT:**

Building that dates from the 11th, 12th and 14th centuries. It is long and narrow with a panelled ceiling, pipe organ and centrally placed steeple (otherwise known as a swallow's beak).

### Givrand

- **CRYPT/MAISON DE LA COUR (MANSION HOUSE):**

Open every afternoon in July/August. Ancient Merovingian crypt from the medieval period. Contact +33 251 551 331 for more information.

### Landevieille

- **CHURCH ST PIERRE:**

Romanesque in origin. The choir is adorned with a beautiful 17th century, 4-columned, marble altarpiece. Baptismal font in black marble and multicoloured Stations of the Cross carved in wood.

### Saint Révérend

- **THE WEALTH OF THE CHURCH:**

A collection of exceptional religious artefacts, including the Lucie and Gabriel church bells that survived the wars of the Vendée.

- **GROTTO:**

Resembles the grotto at Lourdes.

### L'Aiguillon sur Vie

- **CHURCH NOTRE DAME:**

Stained glass windows that commemorate the First World War.

## MARITIM HERITAGE

### Saint Gilles Croix de Vie

- **MAISON DES ECRIVAINS DE LA MER:**

Collection of books by authors writing about the sea. 9 rue Jean Cristau - [www.maisonecrivainsdelamer.fr](http://www.maisonecrivainsdelamer.fr)

- **MAIN LIGHTHOUSE:**

Built in 1875. At 56 feet high, it overlooks La Gite/Le Gabio quarter of town. It is still used by sailors to negotiate their way into the port.

- **JOSÉPHINE'S TOWER:**

Built in 1850 in homage to Joséphine de Beauharnais, it was the first lighthouse to be positioned at the entrance of the port. In 1875 it was converted into a storeroom for explosives, explosives, which led to its 'Dynamite tower' moniker.

### Saint Hilaire de Riez

- **LA LIVARDE:**

The aim of this organisation is to conserve and enhance the maritime heritage of Saint Hilaire de Riez. Boats and engines restored. 3 rue de l'Océan - Tel : + 33 2 28 10 87 30 / + 33 6 22 26 94 41.

- **GROSSE TERRE LIGHTHOUSE:**

Located on the headland of the same name, it overlooks the Pil'hours rocks. The illustrious seafarer, Pierre Garcie-Ferrande, named the headland 'Pointe de Ryé' when describing it to other navigators.

## BUILT HERITAGE

### Saint Gilles Croix de Vie

- **LE QUARTIER DE LA PETITE ÎLE (THE LITTLE ISLAND):**

Situated close to the harbour, this quarter of town, with its labyrinth of narrow streets and ballast stone walls, was built by generations of sailors. It is also referred to as the Moroccan Quarter because its 16th century inhabitants ('Moroccans') were the descendants of Spanish Moors.

- **LE VIEUX SAINT GILLES (OLD SAINT GILLES):**

The most ancient part of town is a picturesque quarter of quaint houses and winding streets.

### Saint Hilaire de Riez

- **VILLA GROSSE TERRE:**

This 1930s property is located near the rocky coast and its architecture reflects that of the time. The park, with its exceptional environment and magnificent views of the ocean, is open to the public.

- **BOURRINE DU BOIS JUQUAUD:**

Traditional thatched cottage in the marshes.

Tel: + 33 2 51 59 94 07 - [www.sainthilairederiez.fr](http://www.sainthilairederiez.fr)

### Brem sur Mer

- **THE VILLAGE OF LA GACHÈRE:**

Sitting at the confluence of the Auzance and Vertonne rivers, this former port was active until the 16th century. Nowadays, the harbour is no more, but this little fishing village is typical of the area and is well worth visiting.

### Commequiers

- **THE MEDIEVAL CASTLE:**

Kept in its green setting, the castle proudly inherited his powerful walls of the 15th century. Still marked by the vagaries of time, it still remains unique in France by its octagonal base.

## DISCOVERY TRAILS

### Saint Gilles Croix de Vie

- **CHEMIN DE LA SARDINE:**

The sardine of Saint Gilles Croix de Vie is the emblem of this maritime quarter and stands out as it is the first saltwater fish to obtain the distinguished "Label Rouge" - Red Label award. Discover the maritime quarter via 14 historical and traditional information points which covers the sardine. An unusual self guided tour is accessible by foot.

- **AU FIL DES PIERRES DE LEST:**

This route steeped in remarkable heritage travels around historical sites from Pont de la Concorde, spanning the river Vie, to Vieux Saint-Gilles, the oldest district of the maritime city, renowned for its typical charming alleys. This tour explores the left bank, once home to merchants, ship captains and notables.

### Saint Hilaire de Riez

- **MONUMENT DES MATTES:**

This monument commemorates the fall of the Marquis de la Rochejaquelein, the leader of the Vendéen royalist uprising. A discovery trail has been created to help visitors gain a clearer understanding of the religious wars of the Vendée. Access is via Le Pissot (Saint Hilaire de Riez), on the way to Le Perrier (D59), chemin de la Tisonnière.

## MÉGALITHS

### Saint Gilles Croix de Vie

- **MENHIR DE LA TONNELLE:**

Located in the Croix de Vie cemetery, at the grave of Doctor Baudouin.

### Brétignolles sur Mer

- **DOLMEN DE LA PIERRE LEVÉE:**

The dolmen consists of a westerly facing, 18-inch thick, oval shaped block of quartz resting on 3 standing stones, two made of granite and one of quartz. This Neolithic tomb is listed as a historic monument. Visible from the D38 road.

### Brem sur Mer

- **MENHIR DE LA CRULIÈRE:**

According to legend, this 1934 listed monument, which is also known as the Pierre du Diable (Devil's Stone) was thrown by the devil when the region was converted to Christianity.

### Commequiers

- **DOLMEN DES PIERRES FOLLES:**

This is undoubtedly the most impressive dolmen in the Vendée. Dating from 4,000 BC, it is located in a wood that sits next to the road to Saint Gilles.

- **MENHIR DE LA PALISONNIÈRE:**

This Neolithic menhir (4,000 BC) sits off the Soullans to Commequiers road and is listed as a historic monument.

## LEISURE ACTIVITIES

## PLACES TO VISIT

## LES RIMAJURES

75 boulevard Georges Pompidou

SAINT GILLES CROIX DE VIE

Tel: +33 2 51 60 73 25

[atelierhenrysimon.com](http://atelierhenrysimon.com)

Place of exchanges and discussions about art.

## ESCALE PÊCHE

53 quai Marcel Bernard

SAINT GILLES CROIX DE VIE

Tel: +33 2 28 17 79 88

[www.escalepeche-vendee.fr](http://www.escalepeche-vendee.fr)

Discover the world of sea fishing.



## L'ATELIER DE LA SARDINE

1 chemin des Gabelous

SAINT GILLES CROIX DE VIE

Tel: +33 2 51 55 68 08

[www.laperledesdieux.com](http://www.laperledesdieux.com)

Exhibition area with videos, gifts, and sardine tasting sessions. The sardine has been canned in Saint Gilles Croix de Vie since 1887.

## LA MAISON DU PÊCHEUR

22 Rue du Maroc

SAINT GILLES CROIX DE VIE

Tel: +33 6 45 57 54 86 / [www.suroit85.fr](http://www.suroit85.fr)

Fisherman's cottage from the 1920s.

## MOULIN DES GOURMANDS

Rue René Bazin

SAINT RÉVÉREND

Tel: +33 2 51 60 16 72

[www.moulin-gourmands.fr](http://www.moulin-gourmands.fr)

Guided tours of the windmill with puzzles and games for children. Let see the donkey and goat enclosure.



## VENDÉE MINIATURE

50 rue du Prégneau

BRÉTIGNOLLES SUR MER

Tel: +33 2 51 22 47 50

[www.vendee-miniature.fr](http://www.vendee-miniature.fr)

One of the most beautiful miniature villages in France.

## BOURRINE DU BOIS JUQUAUD

47 chemin du Bois Juquaud

SAINT HILAIRE DE RIEZ

Tel: +33 2 51 59 94 07

Come discover life in the Marais Breton Vendéen at the beginning of the 20th century.

## CYCLE RENTALS

## L'ANNEXE

5 boulevard du Nord

BRÉTIGNOLLES SUR MER

Tel: +33 6 37 51 78 49

## BIKE AUTHENTIC

23 rue de l'Océan

BREM SUR MER

Tel: +33 2 51 22 02 98 / [www.pslbike.com](http://www.pslbike.com)

## LE GOELAND BLEU

2 place de la Parée

BRÉTIGNOLLES SUR MER

Tel: +33 6 84 51 31 57 / [www.goelandbleu.fr](http://www.goelandbleu.fr)

## ROULAVÉLO

Boulevard de l'Égalité - Forum Port La Vie - Trame 3

SAINT GILLES CROIX DE VIE

Tel: +33 2 51 93 79 06 / [www.roulavelo.com](http://www.roulavelo.com)

## BEACH BIKES

40 avenue des Becs

SAINT HILAIRE DE RIEZ

Tel: +33 5 46 68 13 67 / [contact@beachbikes.fr](mailto:contact@beachbikes.fr)

## CYCL'EVASION

43 A avenue des Becs

SAINT HILAIRE DE RIEZ

Tel: +33 2 51 58 85 80 / [cyclevasion@orange.fr](mailto:cyclevasion@orange.fr)

## CYCLES LAURENT AVRILLA

2 C rue de la République

SAINT HILAIRE DE RIEZ

Tel: +33 2 51 54 49 70 / [www.cycleslaurentavrilla.fr](http://www.cycleslaurentavrilla.fr)

## GOLF AND MINI-GOLF

## GOLF DU PAYS DE

SAINT GILLES CROIX DE VIE

Route de Coëx - Saint Gilles

L'AIGUILLON SUR VIE

Tel: +33 2 51 54 13 94 /

[www.fontenelles.bluegreen.com](http://www.fontenelles.bluegreen.com)

18-hole course.

## MINI-GOLF

2 rue du Pied de Chaume

BRÉTIGNOLLES SUR MER

Tel: +33 9 83 88 81 95

## MINI-GOLF LE PETIT BOIS

Parc Du Petit Bois - Boulevard des Océanides

SAINT GILLES CROIX DE VIE

Tel: +33 7 83 73 87 06



## HORSE RIDING

### LES ECURIES DE LA SAUZAIE

174 Rue de la Grande Sauzaie  
BRÉTIGNOLLES SUR MER  
Tel: + 33 2 51 33 80 80 / [www.ecuries-de-la-sauzaie.fr](http://www.ecuries-de-la-sauzaie.fr)  
Rides through the dunes or along the beach. All levels catered for.

### LES ECURIES DU BOIS DE LA TOUCHE

La Rigordière  
BREM SUR MER  
Tel: + 33 7 70 10 88 85  
[www.ecurieduboisdelatouche.e-monsite.com](http://www.ecurieduboisdelatouche.e-monsite.com)  
Lessons, rides, harnessing, livery service, breaking.

### CENTRE EQUESTRE DE L'AUMARIERE

L'Aumarière  
SAINT RÉVÉREND  
Tel: + 33 6 84 87 45 04  
[www.centre-equestre-aumariere.com](http://www.centre-equestre-aumariere.com)  
Ponies and horses, lessons, taster sessions, beach or country rides.

### DOMAINE DE KARNI

La Mignotière - Route de la Chaize  
BREM SUR MER  
Tel: + 33 6 98 67 26 53

## DONKEY RIDE

### LE RELAIS DES ANES

Route de Villeneuve  
COMMEQUIERS  
Tel: +33 7 61 45 04 74 / [www.lerelaisdesanes.fr](http://www.lerelaisdesanes.fr)

### LE COMITE DES ANES ALPHA BETES

Ferme de la Chevallerie - 21 chemin de Bellevue  
SAINT HILAIRE DE RIEZ  
Tel: + 33 7 69 01 13 75  
[www.comitedesanesalphasbetes.fr](http://www.comitedesanesalphasbetes.fr)

## ÎLE D'YEU

Visit the Yeu Island in one day by boat or take advantage of an all inclusive excursion.

### COMPAGNIE VENDÉENNE

Gare SNCF - Place de la Douane  
SAINT GILLES CROIX DE VIE  
Tel: +33 2 51 60 14 60  
[www.compagnie-vendeenne.com](http://www.compagnie-vendeenne.com)  
Crossings from Saint Gilles Croix de Vie to Ile d'Yeu.



### COMPAGNIE YEU CONTINENT

Gare Maritime Port Fromentine  
LA BARRE DE MONTS  
Tel: + 33 2 51 49 59 69  
[www.yeu-continent.fr](http://www.yeu-continent.fr)  
Crossings from Fromentine to Ile d'Yeu. You can also book with us : bike rentals and guided tours in little train on the island.



## LABYRINTH

### POPCORN LABYRINTHE

SAINT HILAIRE DE RIEZ  
Tel: + 33 7 67 16 80 61 / [www.popcornlabyrinth.fr](http://www.popcornlabyrinth.fr)

## LEISURE PARKS

### ATLANTIC TOBOGGAN

42 avenue des Becs  
SAINT HILAIRE DE RIEZ  
Tel: + 33 2 51 58 05 37  
[www.atlantic-toboggan.com](http://www.atlantic-toboggan.com)  
Water park for families and friends. Emotions guaranteed!



### 201 FOREST AVENUE BOWLING - LASERGAME

201 avenue de la Forêt  
SAINT HILAIRE DE RIEZ  
Tel: + 33 2 51 608 201 / [www.201forestavenue.fr](http://www.201forestavenue.fr)  
Ten pin bowling, laser gaming, bar, fitness centre, restaurant, etc.

### BEAU LAND PARK

Avenue des Becs  
SAINT HILAIRE DE RIEZ  
Amusement Park open all summer.

### DINO'S PARK

63 avenue de la Faye  
SAINT HILAIRE DE RIEZ  
Tel: + 33 6 16 63 27 47 / [www.dinos-park.com](http://www.dinos-park.com)  
Watch life-size robotically-controlled dinosaurs move and roar.

## LEISURE ACTIVITIES

### FEELING FOREST

Avenue de la Parée Préneau  
SAINT HILAIRE DE RIEZ

Tel: + 33 6 26 43 15 21 / [www.feelingforest.com](http://www.feelingforest.com)

Treetop adventure in the forest at St Hilaire de Riez (aged six and upwards).

### PARC DE LA PEGE

75 avenue de la Pège  
SAINT HILAIRE DE RIEZ

Tel: + 33 2 51 54 07 09 / [parcdelapege@orange.fr](mailto:parcdelapege@orange.fr)

Mini golf, merry-go-round, mini go-karting, activities room, etc.

### YOUPLA'LAND

17 chemin de la Conge  
SAINT HILAIRE DE RIEZ

Tel: + 33 7 83 16 13 35 / [www.youplaland.com](http://www.youplaland.com)

Leisure Park for children. 15 fun activities.

### PARC DES DUNES

Rue de l'Ecours  
BREM SUR MER

Tel: + 33 2 51 90 54 29  
[www.parc-des-dunes.com](http://www.parc-des-dunes.com)

Over 40 attractions: water slides, mini golf, etc. Try them as often as you like!



### PUY DU FOU

LES EPESSES  
[www.puydufou.com](http://www.puydufou.com)

Grand Parc and Cinéscénie tickets for daytime shows/night-time show/combined. We also sell tickets for O'fun Park (adventure park), O'gliss Park (water park), Grand Défi (adventure park) and Les Salines (discovering of salt marshlands).



## MOTOR SPORTS

### QUAD'LOC 85

105 avenue de Baisse  
SAINT HILAIRE DE RIEZ

Tel: + 33 6 63 77 14 45 / [www.quadloc85.com](http://www.quadloc85.com)

Two really long sand and dirt quad bike trails (800m children, 1km adults).

### WEST AVENTURE

Le Patis Viaud - Rue du Point du Jour  
SAINT RÉVÉREND

Tel: + 33 2 51 54 66 93  
[www.west-aventure.com](http://www.west-aventure.com)

Adult/child go-kart hire. 2 hour quad bike outings. Paintball. Airbag jumps.



## NIGHT LIFE / CINÉMA

### CINEMARINE

Place de la Félicité  
SAINT GILLES CROIX DE VIE

Tel: + 33 2 28 10 24 63 / [www.cine-marine.com](http://www.cine-marine.com)

4 screen cinema - air-conditioning - giant screens - 3D digital projection.

### LA BALISE - CONCERT HALL

2 rue du Guitton  
SAINT HILAIRE DE RIEZ

Tel: +33 2 51 54 54 58

[www.labalise.fr](http://www.labalise.fr)



### CASINO SAINT GILLES CROIX DE VIE

2 Quai GarcieFerrande  
SAINT GILLES CROIX DE VIE

Tel: + 33 2 51 60 03 04

[www.casinosaintgillescroixdevie.com](http://www.casinosaintgillescroixdevie.com)

Slot machines, roulette, blackjack, Texas holdem poker, restaurant, bar, entertainment.

### CINEMA LE FIEF

Rue du Clocher  
BRÉTIGNOLLES SUR MER

Tel: + 33 2 51 90 17 69

Open April to December - every day in July and August.

## OUTINGS / GUIDED TOURS

### BALADES DE LA VIE - LE PARCOURS

La Main à Sel, 8 impasses de la Fraignaise  
LE FENOULLER

Tel: +33 7 83 50 35 95  
[www.lesbaladesdelavie.fr](http://www.lesbaladesdelavie.fr)

Guided visit in bicycle and boat ride.

### ATTELAGE DE LA VIE

SAINT HILAIRE DE RIEZ

Tel: + 33 6 25 30 33 33  
[www.baladecaleche.fr](http://www.baladecaleche.fr)

Guided tours in a horse-drawn carriage.

### STEP BIKE STEPPE

SAINT GILLES CROIX DE VIE

Tel: + 33 6 51 57 86 29  
[www.step-bike-steppe.com](http://www.step-bike-steppe.com)

Guided bike ride, in the marshes, along the wild coast

and in the forest.

### UN GUIDE EN VENDÉE

SAINT GILLES CROIX DE VIE

Tel: + 33 62 21 90 14  
[www.unguideenvendee.fr](http://www.unguideenvendee.fr)

Guided tours, hikes, nature outings.

**LES PETITS TRAINS DE VENDÉE**

Tel: + 33 2 51 54 54 04

[www.petits-trains-vendee.com](http://www.petits-trains-vendee.com)

Guided tour of the granite coast in summer.

**VELO-RAIL**

Route de Saint Gilles

COMMEQUIERS

Tel: + 33 2 51 54 79 99 / [uk.velorail-vendee.fr](http://uk.velorail-vendee.fr)

Rail-biking trips on a former railway line.

**ORGANISED TRIPS****PARENTHÈSE OCEAN VOYAGES**

76c Route de Soullans

CHALLANS

Tel: + 33 2 51 54 09 88

[www.parenthese-ocean-voyages.fr](http://www.parenthese-ocean-voyages.fr)

One-day passes for the Saint Gilles Croix de Vie area.

**SWIMMING POOLS****PISCINE ECOLE****COMME UN POISSON DANS L'EAU**

Remblai de la Grande Plage - Avenue Maurice

Perray SAINT GILLES CROIX DE VIE

Tel: + 33 6 08 91 70 68

Learn and improve your swimming technique. Indoor heated pool.

**MULTIPELE AQUATIQUE DU PAYS****DE SAINT GILLES CROIX DE VIE**

4 rue du Guitton

SAINT HILAIRE DE RIEZ

Tel: + 33 2 51 55 10 46 / [www.payssaintgilles.fr](http://www.payssaintgilles.fr)**TABLE TENNIS****ENTENTE PONGISTE SAINT GILLES**

Salle de la Chapelle - Rue du Bois

SAINT GILLES CROIX DE VIE

Tel: + 33 2 51 55 51 41

Every Monday in July and August. Sign up between 8 and 8.30pm. Bats available.

**TENNIS DE TABLE BRETIGNOLLAIS**

Rue de la gîte - Salle Gilles Renaud

BRÉTIGNOLLES SUR MER

Tel: + 33 6 76 22 32 50

Summer tournaments. Everyone welcome.

**TENNIS****TENNIS CLUB SAINT GILLES**

BP 512

SAINT GILLES CROIX DE VIE

[www.club.fft.fr/stgillescroixdevie](http://www.club.fft.fr/stgillescroixdevie)

Jaunay open air courts

Avenue de l'Atlantique - April to September

Tel: + 33 2 51 55 19 43

La Soudinière sports hall

Rue de la Rabalette - September to March

Tel: + 33 2 51 55 29 08

Courses for young people and adults. Individual and group lessons. Court hire.

**TENNIS CLUB RIEZ OCEAN**

Rue des Tressanges

SAINT HILAIRE DE RIEZ

Tel: + 33 2 51 54 46 81/

[tennisclub.riezocan@orange.fr](mailto:tennisclub.riezocan@orange.fr)

Tennis court hire. Everyone welcome.

**ATC 85**

Rue de la Gîte

BRÉTIGNOLLES SUR MER

Tel: + 33 2 51 22 43 30 / [www.atc85.fr](http://www.atc85.fr)

Court hire: 1 hour = €10. Reserve your court at the tourist information centre, except July/August (at the clubhouse).

Rue de l'Ecours

BREM SUR MER

Tel: + 33 2 51 90 92 33

2 outdoor courts. Reserve at the tourist information centre in Brem sur Mer.

**TENNIS LOISIRS RÉVÉRENDAIS**

Sports hall - Rue René Bazin

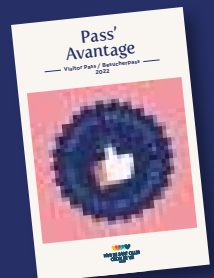
SAINT RÉVÉREND

Tel: + 33 2 51 54 18 01 / [pascal.praud@sfr.fr](mailto:pascal.praud@sfr.fr)

Court hire per hour = €3 per person.

**USE OUR VISITOR PASS FOR REDUCED ENTRY FEES**

in and around Saint Gilles Croix de Vie. Available in any of our tourist information centres.

*Don't forget to ask for our pass !*

# FAMILY TREASURE HUNTS

## 10 ROUTES TO CHOOSE FROM



### ZOÉ SUR LA PISTE DU MEILLEUR SHAPEUR

Bike trail  
in Brétignolles sur Mer  
*Duration : about 2 hours*



### AGNÈS ET LE PHARE DE GROSSE TERRE

Walking trail  
in Saint Hilaire de Riez  
*Duration : 1.5 hours*



### GASPARD SUR LA PISTE DU VOLEUR DE SARDINES

Walking trail  
in Saint Gilles Croix de Vie  
*Duration : 1.5 to 2 hours*



### LÉONIE ET LE MYSTÈRE DE LA CORNICHE

Walking trail  
in Saint Hilaire de Riez  
*Duration : 1.5 hours*



### VICTOR GRAINE DE DÉTECTIVE

Walking trail  
in Moulin des Gourmands  
*Duration : 30 minutes*  
*Price: 1.50 per child*



### THÉO ET LE SECRET DU CHÂTEAU

Walking trail  
in Commequiers  
*Duration : 45 minutes*



### JUSTIN ET LE TRÉSOR DES CHEVALIERS

Walking trail  
in Brem sur Mer  
*Duration : 1.5 hours*



### NINA ET LE MONSTRE DE BOISVINET

Walking trail  
in Saint Gilles Croix de Vie  
*Duration : 1.5 hours*



### GABRIEL ET L'ÉPAVE MIRACULEUSE

Walking trail  
in Saint Gilles Croix de Vie  
*Duration : 1 hour*



### SACHA ET L'ARBRE ENCHANTÉ – NEW 2023

Walk in the forest of St Hilaire de Riez  
*Duration : 2 hours*

## READY FOR A FUN FAMILY ACTIVITY?

We have prepared 6 treasure hunts (available in English) full of coded messages, brainteasers and puzzles.

A great way to discover the past and the present of Saint Gilles Croix de Vie, Saint Hilaire de Riez, Brétignolles sur Mer and Brem sur Mer. Treasure maps for sale (€3) in each of our tourist information centres.







## SOME EXPRESSIONS IN FRENCH

- **Do you speak English?**  
*Parlez-vous anglais ?*
- **Thank you**  
*Merci.*
- **Please**  
*S'il vous plaît.*
- **I don't understand**  
*Je ne comprends pas.*
- **Is it free of charge?**  
*C'est gratuit ?*
- **Could you give me a brochure for the area?**  
*Pouvez-vous me donner une brochure sur la région ?*
- **Could I have a map of the town?**  
*Puis-je avoir un plan de ville ?*
- **I'm looking for the ... campsite. Where is it exactly?**  
*Je recherche le camping ... Où est-il situé ?*
- **Could I have the list of the services the town provides?**  
*Pourrais-je avoir la liste des services de votre ville ?*
- **I need a list of GPs for the town**  
*J'ai besoin de la liste des médecins de votre ville.*
- **Have you got a list of chemist's for the town?**  
*Avez-vous la liste des pharmaciens de la ville ?*
- **Where are the public toilets, please?**  
*Où sont les toilettes s'il vous plaît ?*
- **I'm looking for a bureau de change**  
*Je cherche un bureau de change.*
- **Where is the nearest cash machine?**  
*Où est le distributeur de billets le plus proche ?*
- **Where can we find a bicycle hire shop?**  
*Où pouvons-nous trouver un loueur de vélo ?*
- **When is this shop open?**  
*Quand est ouvert ce magasin ?*
- **How much does it cost?**  
*Combien ça coûte ?*
- **Is this brochure free?**  
*Cette brochure est-elle gratuite ?*
- **Do you have this brochure in English?**  
*Avez-vous cette brochure en anglais ?*
- **Have you got a Wi-Fi or an internet connection?**  
*Avez-vous la wifi ou internet ?*
- **How can we connect our computer to Wi-Fi?**  
*Comment pouvons-nous connecter notre ordinateur au Wifi ?*

## OUR TOURIST INFORMATION OFFICES



### SAINT GILLES CROIX DE VIE

Place de la Gare

85800 Saint Gilles Croix de Vie

Tél. : +33 2 51 55 03 66

contact@saintgillescroixdevie-tourisme.fr

### SAINT HILAIRE DE RIEZ

21 Place Gaston Pateau

85270 Saint Hilaire de Riez

Tél. : +33 2 51 54 31 97

contact@sainthilairederiez-tourisme.fr

### BRÉTIGNOLLES SUR MER

1 boulevard du Nord

85470 Brétignolles sur Mer

Tél. : +33 2 51 90 12 78

contact@bretignollessurmer-tourisme.fr

### BREM SUR MER

21 ter rue de l'Océan

85470 Brem sur Mer

Tél. : +33 2 51 90 92 33

contact@bremsurmer-tourisme.fr

[uk.payssaintgilles-tourisme.fr](http://uk.payssaintgilles-tourisme.fr)

